

The NERC logo consists of the letters "NERC" in a bold, black, sans-serif font. A horizontal blue bar is positioned directly beneath the letters.

NORTH AMERICAN ELECTRIC
RELIABILITY CORPORATION

GADS Solar and Wind Training - Introduction

NERC GADS Wind and Solar Team
Training for Solar PV and Wind Plants
April 29 – May 1, 2025

RELIABILITY | RESILIENCE | SECURITY

- NERC team
- OATI Team
- Facility review (safety, etc.)

- NERC Antitrust Guidelines:
 - NERC's policy and practice is to obey the antitrust laws and to avoid all conduct that unreasonably restrains competition. This policy requires the avoidance of any conduct that violates, or that might appear to violate, the antitrust laws. Among other things, the antitrust laws forbid any agreement between or among competitors regarding prices, availability of service, product design, terms of sale, division of markets, allocation of customers or any other activity that unreasonably restrains competition.

- Let's make sure you can log in
- <https://dev.nercsuite.oati.com/nercsuite/>



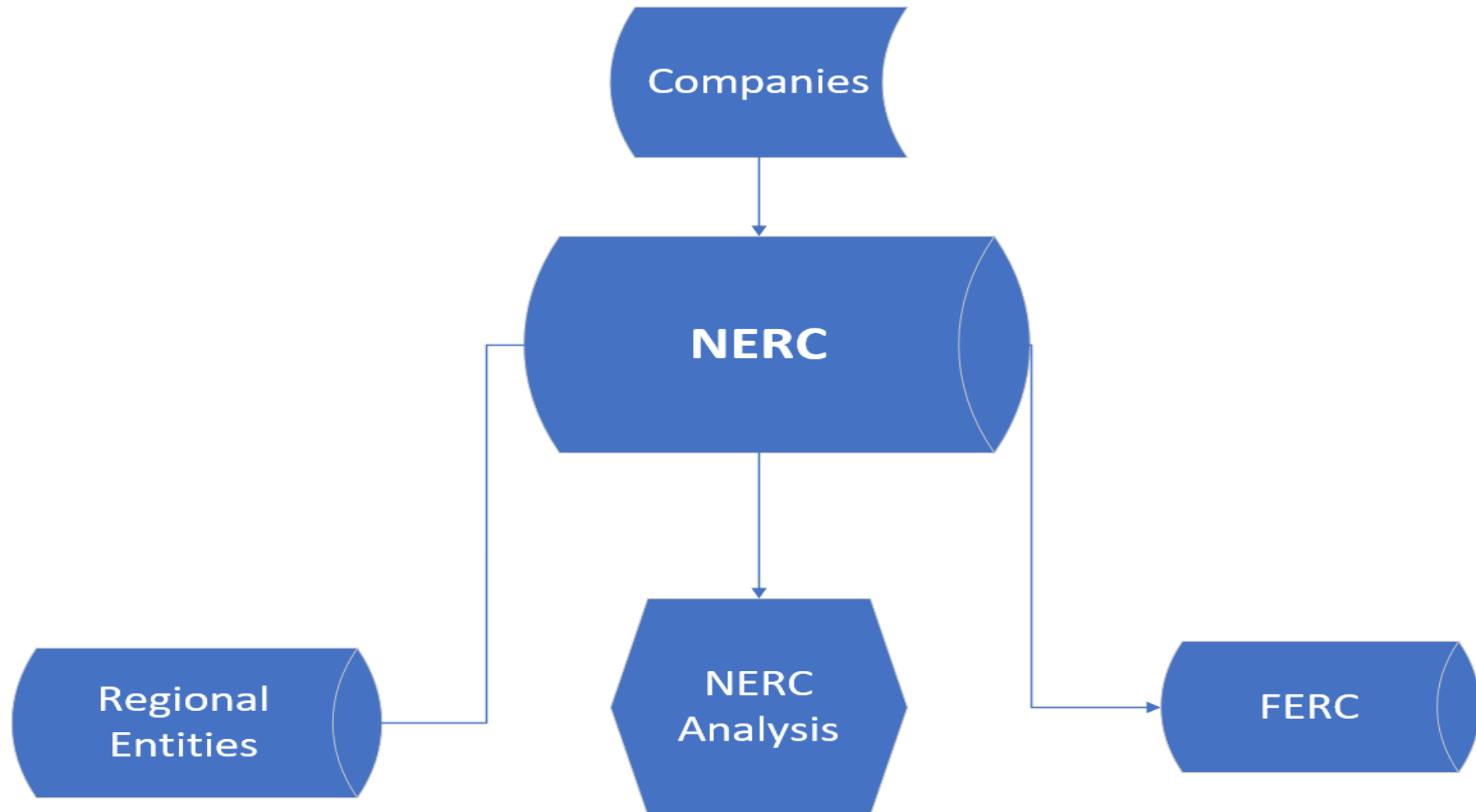
- NERC GADS page:
 - [https://www.nerc.com/pa/RAPA/gads/Pages/GeneratingAvailabilityDataSystem-\(GADS\).aspx](https://www.nerc.com/pa/RAPA/gads/Pages/GeneratingAvailabilityDataSystem-(GADS).aspx)
- GADS Solar Data Reporting Instructions:
 - https://www.nerc.com/pa/RAPA/PA/Section1600DataRequestsDL/2024_GADS_Solar_DRI.pdf
- GADS Wind Data Reporting Instructions
 - <https://www.nerc.com/pa/RAPA/gads/Pages/GADS-Wind-DRI.aspx>
- GADS User Group request:
 - <https://eroportal.nerc.net/>
 - First create ERO portal account, then email
- GADS User Registration Form:
 - https://www.nerc.com/pa/RAPA/gads/GADS%20FAQ/Instructions_for_OATI_account_Edge-20240412.pdf
- Email specific inquiries to gadssolar@nerc.net or gadswind@nerc.net

- GADS Wind Training:
 - <https://www.nerc.com/pa/RAPA/gads/Pages/GADS-Wind-Training.aspx>
- GADS Solar Training:
 - <https://www.nerc.com/pa/RAPA/gads/Pages/Training.aspx>

These training slides will not exactly match what is posted to the website.

This in-person training is highly interactive!

Please ask questions anytime.



Chapter 4: Grid Performance

!Examples – Not Final!

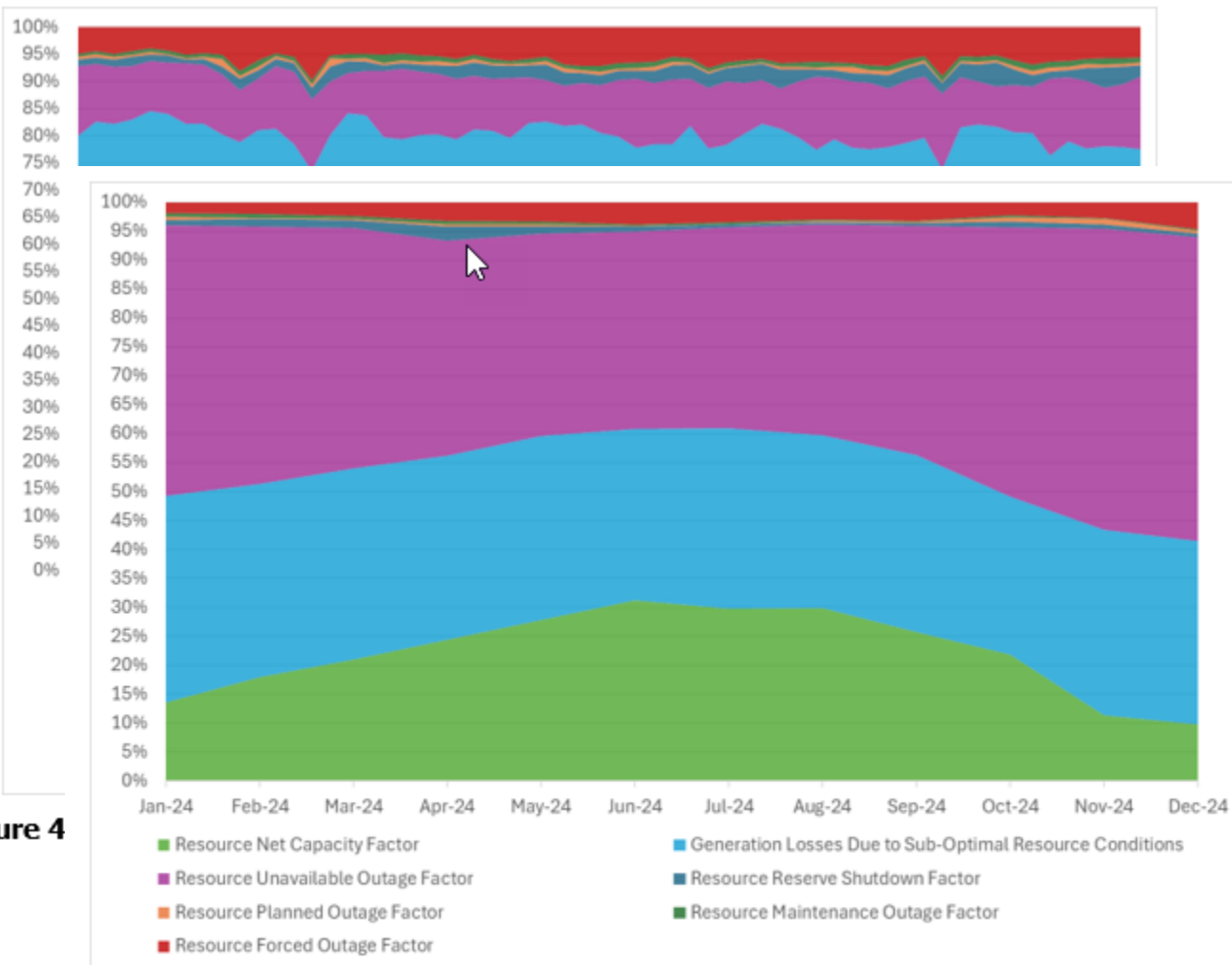
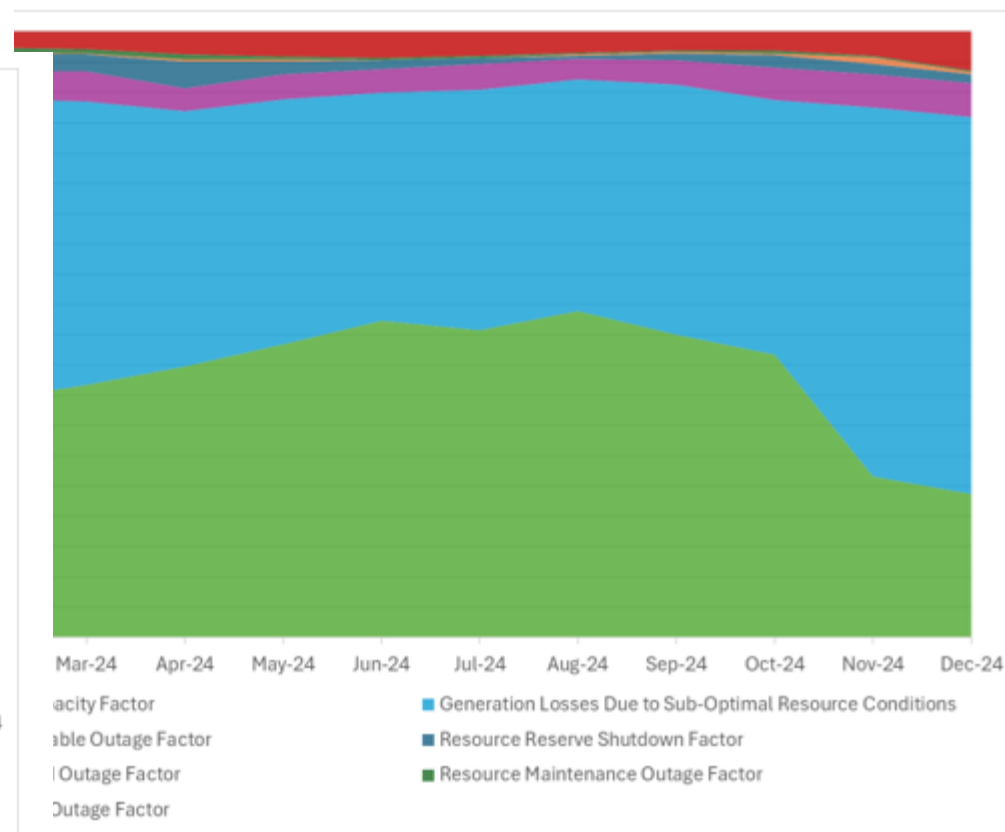


Figure 4

Figure 4.12: Monthly Factors for Solar Plants >100MW

Chapter 4: Grid Performance



Monthly Factors for Solar Plants >100MW During Daytime Hours

FE Forms Checklist for 2024

Form Name	Form	Status	Reason	Completed
Contacts		Reviewed		Yes
Plants		Reviewed		Yes
Inverter Groups		Reviewed		Yes
Energy Storage		Reviewed		Yes
Events	1.0	Completed		Yes
Quarter 1		Data Entered		Yes
Quarter 2		Data Entered		Yes
Quarter 3		Data Entered		Yes
Quarter 4		Data Entered		Yes
Performance - Inverter Group	2.0	Completed		Yes
Quarter 1		Data Entered		Yes
Quarter 2		Data Entered		Yes
Quarter 3		Data Entered		Yes
Quarter 4		Data Entered		Yes
Performance - Energy Storage	3.0	Completed		Yes
Quarter 1		Data Entered		Yes
Quarter 2		Data Entered		Yes
Quarter 3		Data Entered		Yes
Quarter 4		Data Entered		Yes

A map of North America, including the United States, Canada, and Mexico. A horizontal band of varying shades of blue and grey stretches across the middle of the map, passing through the United States. The text "Questions and Answers" is overlaid on this band.

Questions and Answers